



DESIGNED BY
Kevin Boland

CHARACTERISTICS
Contemporary | Classic | Versatile

COLLECTION
With its distinctive mix of clean lines and subtle curves, coupled with an open weave styling gives the Valencia collection a contemporary classic feel, and a versatility for any setting, whether formal or casual.

CUSTOMISATION
Choose your Rehau® fibre and cushion colours to style it your way.

COMBINES WELL
Valencia chairs combine well with Partu tables.

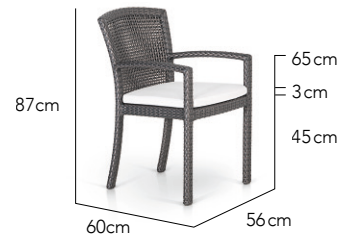
VALENCIA

SPECS SHEET

Side Chair



Arm Chair



Finishing Materials

Fibre | Open Weave



Chalk



Natural



Bronze



Titanium

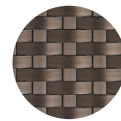
Fibre | Closed Weave



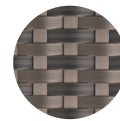
Chalk



Natural



Bronze

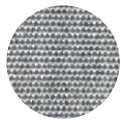


Titanium

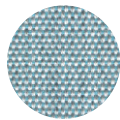
Seat Cushion Fabrics



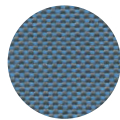
Natural



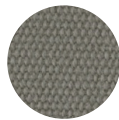
Granite



Spa



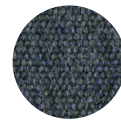
Adriatic



Taupe

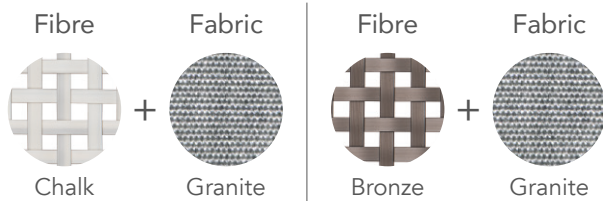


Charcoal



Aral

Suggested Combinations



More Finishing Options

For more fibre, fabric and accent cushion options, please visit our website.

Icons



Optional Covers