



DESIGNED BY  
Kevin Boland

CHARACTERISTICS  
Curvaceous | Cocooning | Pampering

### COLLECTION

The Tamaru day bed, complete with half moon side tables, takes on a natural form inspired by a shape of sea coves. Curvaceous and cocooning in design, the traditional caning weave style hints of tranquil bygone days. Perfect for curling up with a good book or loved one.

### CUSTOMISATION

Choose your Rehau® fibre colour and cushion colours to style it your way. Make the final statement with OHMM Accent cushions.

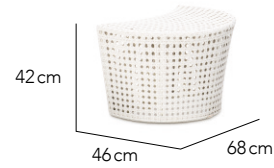
# TAMARU

## SPECS SHEET

### Day Bed



### Half Moon Side Table



### Finishing Materials

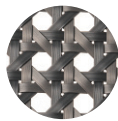
#### Fibre



Chalk



Natural



Titanium

#### Table Top Glass



Clear Glass

#### Table Top Options



Fibre

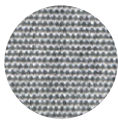


Fibre + Clear Glass

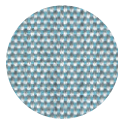
### Seat Cushion Fabrics



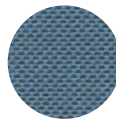
Natural



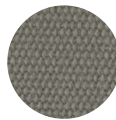
Granite



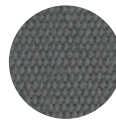
Spa



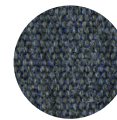
Adriatic



Taupe

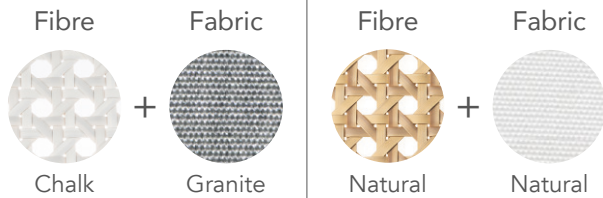


Charcoal



Aral

### Suggested Combinations



### More Finishing Options

For more fibre, fabric and accent cushion options, please visit our website.

Day Bed Back Cushions  
45cm x 60cm | 18" x 24" (4 pcs)  
35cm x 35cm | 14" x 14" (3 pcs)

### Icons

